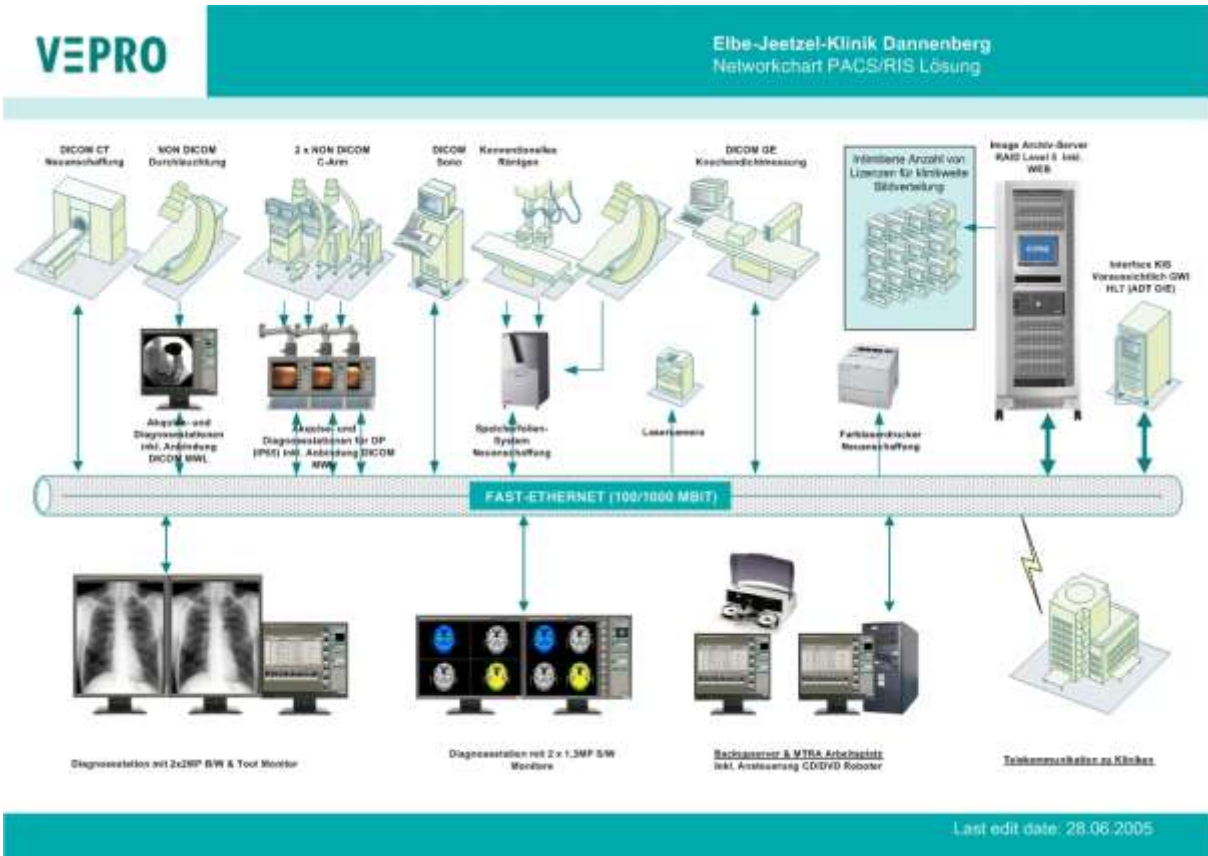


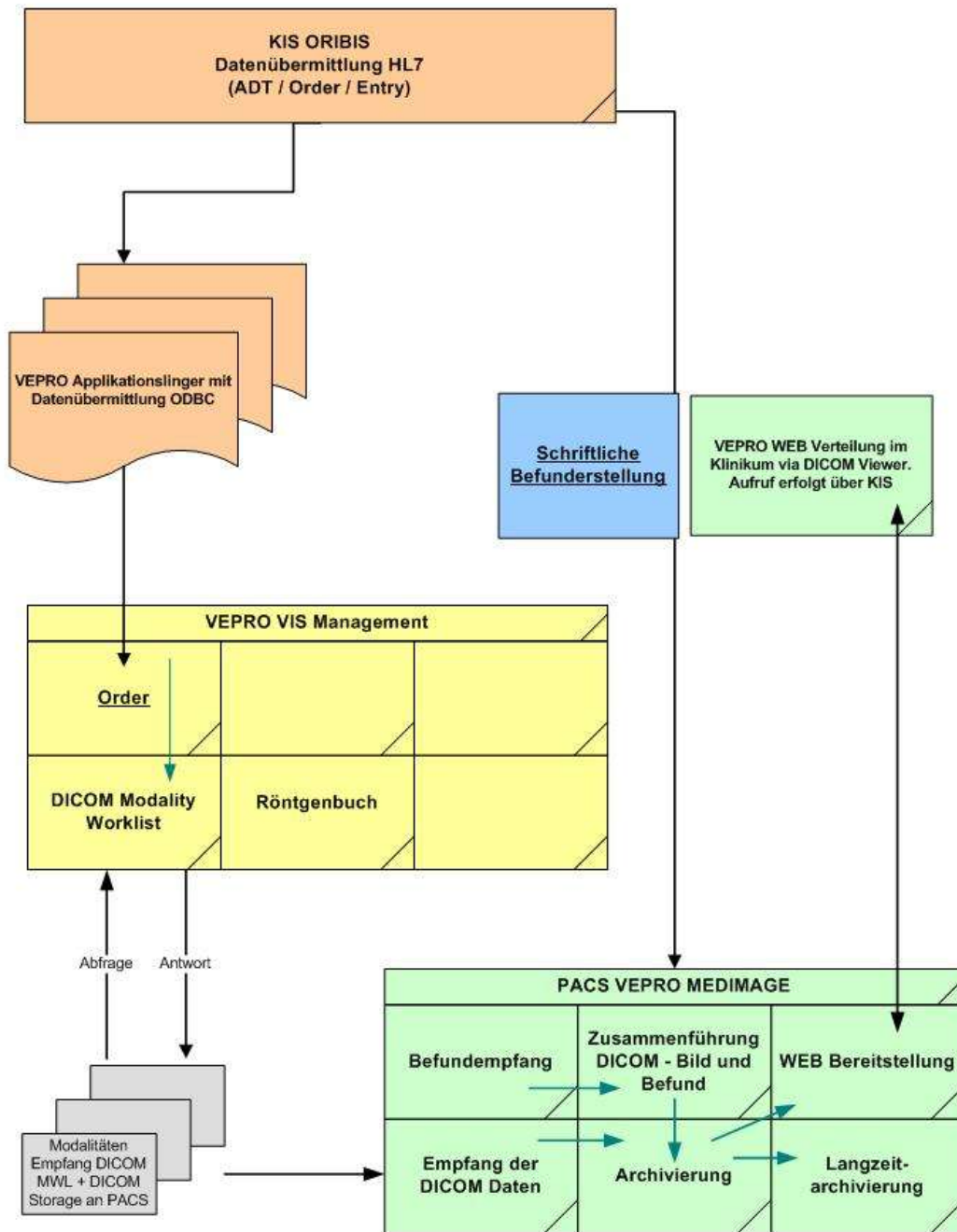
Hospital/Institution Name:	Elbe-Jeetzel-Klinik Dannenberg		
City/Country:	Dannenberg	Germany	
Contact Persons (Phone, E-Mail):	Herr Grieser	+49 5861 83 0	
		info@elbe-jeetzel-klinik.de	
Consultant (Address, Phone, E-Mail):	Clinic Plan, Herr Bieling	9305 9889 0	
Connected Modalities DICOM:	1 x CT, 1 x CR, Knochendichtmessgerät, US		
Connected Modalities ANALOG:	1 x DL, 1 x Video-Endoscopie, 2 x C-Arm		
Installation date:	01.09.2006		
Investment Volume ca.:	180.000 € - 220.000 €		
Patients per day:	GB per day:	120	GB 1
Server size:	TB per year:	1 TB	0,3 TB
Number of Diagnosis Stations:	3		
HIS/RIS Integration with Vendor:	GWI ORBIS KIS		
Telecommunication with:	Lüneburg		
Special Applications or Integrations:	VEPRO Application Linker to GWI ORBIS. VIS for Workflow management incl. DICOM MWL from VEPRO		



Network Chart

VEPRO

Workflow Konzepts
Dannenberg





Aerial views



Main entrance



X-Ray CT



ICU